

# **INSTITUTIONAL DEVELOPMENT PLAN**

**Valid from: 22-01-2021**

**G.B. Resolution No. 13(a) dated 22-01-2021**



**NALBARI COLLEGE, NALBARI, ASSAM-781335**



### **About the College**

Nalbari College, the oldest Institution of Higher Education, established in the year 1945 (4<sup>th</sup> July), has been engaged in disseminating knowledge and imparting various skills to the students. Over the last eight Decades, the college has been growing with addition of ,programmes, courses,open and distance learning centres, technological aids and trying its best to meet the needs of the society and the region in the sphere of education and has been consistently making efforts to provide an atmosphere of holistic development of the students appropriating them to be responsible citizen and good human beings.

The college was initially affiliated to Calcutta University. Later on after the establishment of Gauhati University (1948), the college came under the academic jurisdiction of the Gauhati University. The college received the 2(f) recognition from University Grant Commission on 01-12-1963 and 12B on 17-06-1972. Beginning with a modest number of only 28 students in 1945, today the college has a sizable strength of about 2582 students (UG & PG students only). Presently the college has been offering 34 UG, 2 PG and 1PG Diploma and an ample number of certificate programmes. Spreading over 14 acres of land, the college has a built-up area of 2.6 acres. The College draws strength and inspiration from the untiring efforts of its founding figures and strives to live up with the dreams of these noble souls to produce competent and industrious human resource for the society. Today, the institution become a nodal facilitating centre for inclusive and sustainable nation.

### **Vision of the college**

Nalbari College with eight decades of its glorious existence is guided by the motto *Vidyayaa Vindate Amritam* i.e. scholarship offers eternity. This profound vision encapsulates the institution's commitment to foster academic excellence and lifelong learning.

### **Mission of the college**

- To create better academic environment in order to produce competent and industrious human resource.
- To provide studentcentred academic and personal enrichment opportunities forencouraginglifelong learning.
- To accommodate and align with the changing traits of the higher education.
- To reach and empower the unreached.

## SWOC analysis

<i>Strength</i>	
<ul style="list-style-type: none"> <li>• Long standing legacy and reputation in the state academia.</li> <li>• Largest and age-old college within the district and recognized as District Nodal College by Govt. of Assam.</li> <li>• Adequate land resource for further extension of state of the art research facilities.</li> <li>• Ecofriendly campus for the stakeholders.</li> <li>• Strong collaboration with local and state level organizations and community involvement with various extension and outreach programs.</li> <li>• Active student involvement for the promotion of regional and cultural heritage.</li> </ul>	
<i>Opportunities</i>	
<ul style="list-style-type: none"> <li>• Opportunities to form academic and research collaborations with national and international institutions.</li> <li>• Scope for the introduction of new and time relevant skill-based courses for employability of graduate students.</li> <li>• Strengthening the alumni involvement for further development of the college and the region</li> <li>• Utilization of e-learning resources through UGC-SWAYAM portal.</li> </ul>	
<i>Weakness</i>	
<ul style="list-style-type: none"> <li>• Lack of substantial research and infrastructural grants.</li> <li>• Sense of remoteness lead to the non-attainment of optimal strength of the student and teacher.</li> <li>• Dilapidated infrastructural facilities due to long standing existence of the college since 1945.</li> <li>• Non adequate state of the art laboratories.</li> <li>• Lack of Industrial Collaboration although the rich agricultural resources in the region.</li> </ul>	
<i>Challenges</i>	
<ul style="list-style-type: none"> <li>• Alignment with Global Trends in Higher Education and Research.</li> <li>• Ample of alternative options through online platforms in recent time.</li> <li>• Shifting Student Preferences toward Institutions with cutting-edge facilities and global exposure.</li> </ul>	

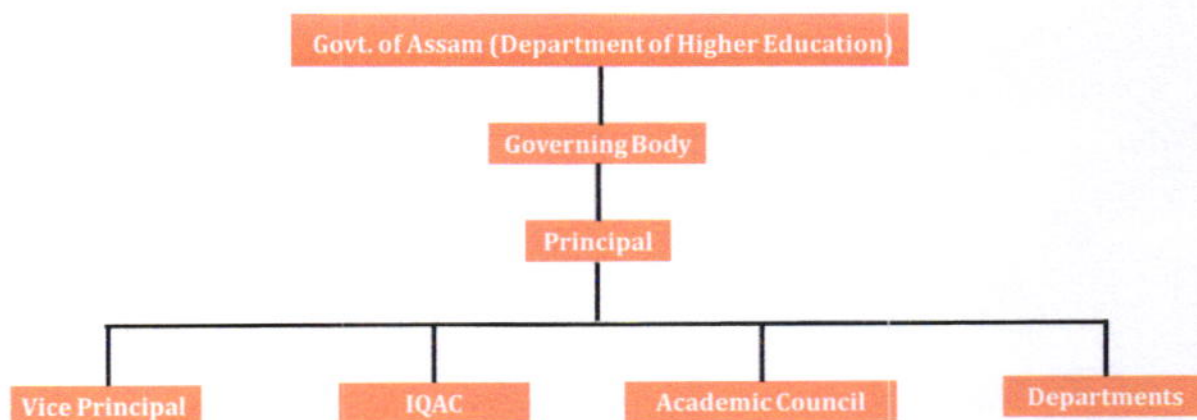
### Focused area 1. Quality education

The institution aims to achieve academic excellence through a combination of regular and blended mode of teaching through the platform like SWYAM. The college is focusing on a technology-enabled learning environment to enhance students' critical thinking and meet modern-day requirements. The following strategies shall be followed to impart quality education to the student as per the mission and vision of the institute.

1. **Interactive teaching method:** The college will emphasize on incorporating real world applications to foster critical thinking and problem-solving abilities. This includes the use of multimedia resources, interactive simulations, and real-time feedback systems.
2. **Continuous evaluation process:** College emphasizes on continuous evaluation system to maintain the quality of education, and to monitor the student progression.
3. **Building effective learning ambience:** The college will focus to develop classroom materials to create an effective learning environment.
4. **Implementation of NEP2020:** The institute will implement NEP2020 as and when implemented.
5. **Enticement to talented work force:** The college will also emphasize to attract, reward, and retain talented work force to enhance the standard of quality education.



6. **Triggering feed-back system:** The real-time feedback system from the all stakeholders on



teaching-learning process, administrative process will be implemented massively in future to upgrade the educational quality of the institute.

7. **Boosting Experiential learning:** The college will give importance on the experiential learning through project-based approach and exposure trips.
8. **Professional development for the teachers:** The college encourages the continuous professional development of its faculty members. College incentivises teachers to participate in workshops, seminar, and publish their research outputs in the journals of national and international standard.
9. **Supportive learning environment:** The college will continue with its mentor-mentee system to support student both mentally and educationally.
10. **Engagement with community:** For better socialization of the student, the competent authority will organize student outreach program time to time.
11. **Emphasize on mental health of the student:** The college will organize a systemic counselling system to support the students in academic and professional development by internal and external counsellors. This includes Academic Counselling, Personal Counselling, and Career Counselling.

## Focus area 2. Quality assurance

To achieve excellence in academics, research, administration, extension, and other activities, the Nalbari College has adopted four points – quality intake, quality delivery, timely assessment, and evaluation/quality outcome. The quality assurance cell of the college acts as a monitoring agency to oversee processes and strengthen the overall academic and administrative environment. The cell is dedicated to setting standards for quality education and designing various mechanisms for the future development of the college.

To assure and enhance the capacity of the institute at academics and management level, the institute proposes to conduct regularly the faculty development program, workshop, seminar, conferences etc.

The IQAC will derive the strategy to secure best possible grade in NAAC accreditation and NIRF ranking within top 500 hundred institutions of the country.

**Figure: Schematic representation of the quality assurance management of the college**

## Focus area 3. Academic infrastructure



The college is giving importance in maintaining the existing non-recurring infrastructures with special emphasis to improve classroom and multimedia infrastructure.

1. The college planned to build ICT enable classrooms across all departments with secure and high speed WIFI internet connectivity.
2. The college planned to increase the numbers of the digital classroom facility.
3. The college planned to increase the residential facilities for the student with the construction of new hostels.
4. The college also planned to increase the green cover area with subsequent landscaping of the existing structure of the college campus.
5. The college will continue with support system to repair and maintain the age-old structure of the institute.

#### **Focus area 4. Research and Development**

Research is an important criterion for the growth of a higher education institution. Recognizing this, the college has outlined several initiatives to implement over the next five years, despite limited resource availability.

1. Incentivise faculty to publish research papers in indexed journals.
2. Provide faculty and student seed funding to encourage research through experiential learning practices.
3. Incentivise faculty through research project grant like Tarini Charan Talukdar Project grant for humanities. College also encourages faculty to involve in doctoral as well as post-doctoral activities.

#### **Focus area 5. Collaboration with nearby institutes and social organizations**

The college promote collaboration with different institute and social organizations to enhance the standard of self-responsibility, employability of the student. This approach provides opportunities for students and faculty to understand different social problems and to come out with sustainable and innovative solution.

1. The college is promoting faculty and student exchange program with different higher educational institutions.
2. The college promote alumni engagement at different levels for the capacity building activities of the institute.
3. College also aims to have collaboration with prominent research institute and industries to create possibilities for research projects, internships for students and faculties.

#### **Focus Area 6. To promote skill and innovation**

Continuous improvement of the skill with innovative mind is the basic requirement of modern days education. To promote these twofronts, the institute adopt following steps

1. Establishment of Institution Innovation Council (IIC) – The college established IIC to explore the innovative talent of the students.
2. To enhance skill among the student in different professional fields, collegewill arrange more exposure trips for the students.
3. College also encourages departments to conduct different skill-based training programs both for the community and student.
4. The collage stand aligns with different governmental skill-based schemes like Skill India, Atmanirbhar Bharat etc.

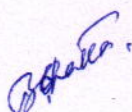
Overall, the perspective plan of action is designed to foster academic excellence, enhance research capabilities, and create a robust, technology-enabled learning environment. By prioritizing quality education and continuous improvement, the college is committed to



equipping students with the skills and knowledge necessary to meet contemporary challenges and contribute meaningfully to the society. Through dedicated efforts and perspective initiatives, Nalbari College aspires to achieve its vision of becoming a leading institution in higher education.

\*\*\*\*\*

Adopted



(Bhabendra Nath Bhattacharyya)  
President  
G.B. Nalbari College, Nalbari

**President  
Governing Body  
Nalbari College, Nalbari**



(Dr. Kamal Nayan Patowary)  
Principal & Secretary  
Nalbari College, Nalbari

*Principal/Secretary  
Nalbari College, Nalbari  
Nalbari : Assam*





# **NALBARI COLLEGE, NALBARI**

ESTD.: 1945

NALBARI-781335 (Assam)

Accredited "B+" Grade by NAAC

Website: [www.nalbaricollege.ac.in](http://www.nalbaricollege.ac.in)

E-mail Id: [nalbaricollege1945@gmail.com](mailto:nalbaricollege1945@gmail.com)

Ref:

Date:- 22-01-2021

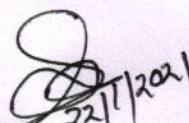
**Proceeding of the Governing Body Meeting  
Nalbari College, Nalbari  
Held on 22-01-2021**

**Resolution No. 13(a)**

The Governing Body in its meeting held on 22-01-2021 discusses the proposed Institutional Development Plan (IDP). The Governing Body resolved to adopt a resolution.

**"Resolved that the IDP as proposed by Principal, Nalbari College, Nalbari be adopted. The IDP will remain in force from the date of the meeting of the G.B. i.e., 22-01-2021."**

Sd/-  
(Bhabendra Nath Bhattacharyya)  
President  
G.B. Nalbari College, Nalbari

  
(Dr. Kamal Nayan Patowary)  
Principal & Secretary  
Nalbari College, Nalbari

*Principal/Secretary*  
Nalbari College, Nalbari  
Nalbari : Assam